

**Installation Manual**

**CARGOBLOCK**

---

**The anti-theft for light commercial  
vehicles' rear and side doors**



**CARGOBLOCK Cod. 0001070001302**



**Renault Trafic**



**Fiat Talento**

## **A– INTRODUCTION**

The purpose of this Handbook is to provide guidelines for a correct installation of **CargoBlock** on a commercial vehicle. It is advisable to carefully follow all the procedures contained in this manual, essential to correctly install the anti theft device.

**Attention** : information given below are made available by the Services Department and are indicative. They always require a post installation verification.

**StarBlock** disclaims all liabilities for any damage incurred to the vehicle for incorrect installation or for failure to follow Instructions.

## **B– GENERAL GUIDELINES**

CargoBlock installation has been tested on vehicles following Assembly instructions which are analyzed in this guide..

Product warranty registration is required on the website:  
[www.starblock.it](http://www.starblock.it)

## C- TECHNICAL FEATURES

It is the anti theft device for the rear and side doors of light commercial vehicles.

Reliable for its light alloy composition. It is made of aluminum with **preformed and pre-drilled stainless steel plates**.

Thanks to its design and technology it is practical and easy to install. It is equipped with plates dedicated to the fixing system of each vehicle.

No holes and no changes are made on the doors. The device is installed on the lock studs.

**CargoBlock** is equipped with **StarBlock®** lock with proprietary technology and non duplicable profile key.

Patent n° **202016000071343**

## D- MAINTENANCE

The maintenance of the product concerns only the periodic cleaning of the lock, through the use of compressed air in the lock hole to eliminate any deposits of dust and lubricating spray.

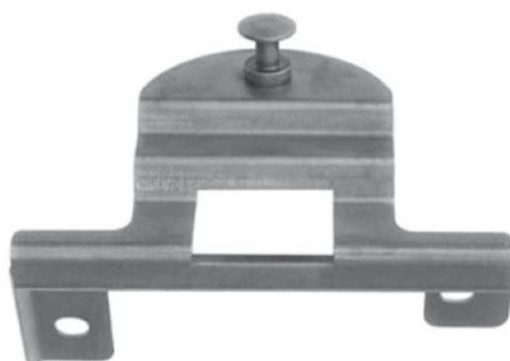
Maintenance is recommended every six months or more frequently if you work in environments where dust, sand or other similar material are high.

## E- BOX CONTENTS

1. Rear door plate, left side;



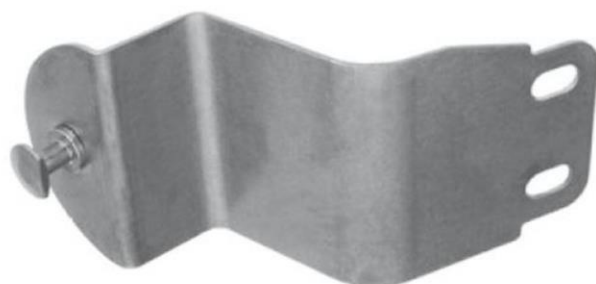
2. Rear door fixing plate, right side



3. Side sliding door plate



4. Side door fixing plate



5. Accessory: stud M6X25



## F – INSTALLATION GUIDE

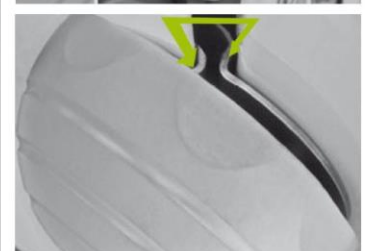
### 1– Rear door, left side

- Unscrew the torx screw securing the lock;
- Tighten the M6x25 stud to prevent the lock from coming loose during installation, then unscrew the two torx screws (**img. 1**);
- Position the left-hand side rear door plate at the lock fixing holes and screw in the two torx screws (**img. 2**);
- Unscrew the stud and screw in the other original lock torx screw (do not screw in the screws completely for final adjustment of the plate).



### 2– Rear door, right side

- Unscrew the two torx screws securing the lock hook bracket (**img. 3**);
  - Position the right-hand side rear door fixing plate at the holes and screw in the two torx screws.
- Caution: do not pinch the gasket between the edges of the door and the plate and do not screw in the screws completely for final adjustment of the plate (**img. 4**);
- Align the two doors and check that the plates are aligned. Then tighten all screws firmly (**img. 5**).



img.3

img.5



### 3- Side sliding door plate

- Unscrew the torx screw securing the lock and screw in the stud to prevent the lock from coming loose during installation. Finally unscrew the other two torx screws (**img. 6**);
- Position the side sliding door plate at the holes and tighten the two original torx screws (**fig. 7**);
- Unscrew the stud and tighten the other original torx screw on the lock (do not tighten the screws completely for final adjustment of the plate) .



img.6



img.7

### 4- Side door fixing plate

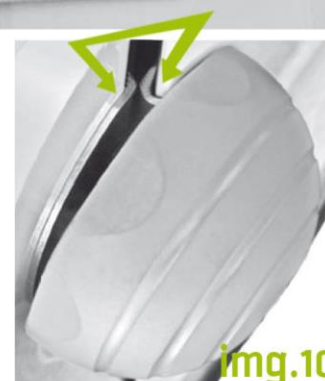
- Before unscrewing the hook, mark its original position with a felt-tip pen (to facilitate reassembly). Finally unscrew the two torx screws that secure the hook (**img. 8**);
- Position the side door fixing plate at the holes and reposition the hook in its original position;
- Fix the two torx screws (do not tighten the screws completely for final adjustment of the plate) (**img. 9**);
- Align the two doors and check that the plates are aligned (**img. 10**), then tighten all screws.



img.9



img.8



img.10



**ST AUTOMOTIVE SRL**  
**Ss 96 Strada Vicinale**  
**Lamarossa snc - 70026 Modugno (BA)**  
**T. +39 080 2143503 - F. +39 080 9692317**  
**[info@starblock.it](mailto:info@starblock.it)**

