

**Installation Manual**

**CARGOBLOCK**

---

**Commercial vehicles load  
compartment doors protection**



**CARGOBLOCK Cod. 0001070002202**



**Opel Vivaro New Version**

## A – INTRODUCTION

The purpose of this manual is to provide guidelines and information for the correct installation of the **CargoBlock** on the commercial vehicle.

We recommend that you carefully follow all the procedures in this manual, which are indispensable for correctly installing the antitheft.

**Attention:** the information given here is supplied by the Service Department, is indicative and requires post-installation verification.

**StarBlock** accepts no liability for any damage caused to the vehicle through incorrect assembly or failure to follow instructions.

## B - GENERAL GUIDELINES

The installation of CargoBlock has been tested on vehicles following the installation instructions which are analysed in the following manual.

Registration of the CargoBlock product warranty is required on [www.starblock.it](http://www.starblock.it)

## C- TECHNICAL FEATURES

It is the anti-theft device for the rear and side doors of commercial vehicles.

Reliable due to its light alloy composition. It is made of aluminium with preformed and pre-drilled stainless steel plates. Thanks to its design and technology, it is practical and easy to install.

It is equipped with plates dedicated to the fixing system of each vehicle. No holes or modifications are made on the doors, the anti-theft device is installed on the lock studs.

CargoBlock is equipped with **StarBlock®** lock **technology** and an induplicable profile key.

Patent n° **202016000071343**.

## D – MAINTENANCE

Maintenance of the product only involves periodic cleaning of the lock, using compressed air in the keyhole to remove any dust deposits and lubricating spray.

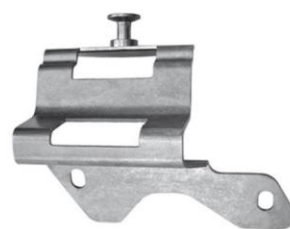
Maintenance is recommended every six months or more frequently if working in environments where the presence of dust, sand or similar material is high.

## E - BOX CONTENTS

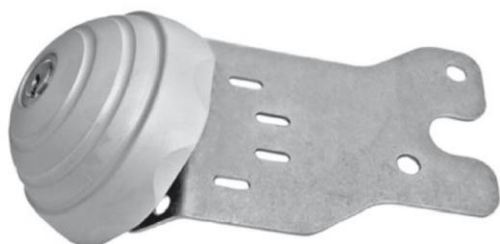
1. Back door plate, left side



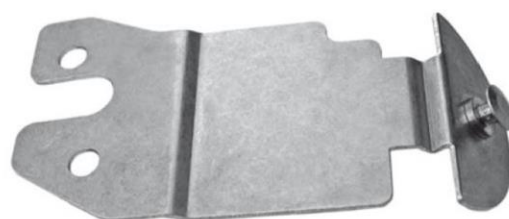
2. Fixing plate, rear door right side



3. Side sliding door plate



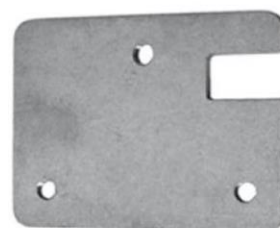
4. Side door fixing plate



5. Accessory: stud m8X25;



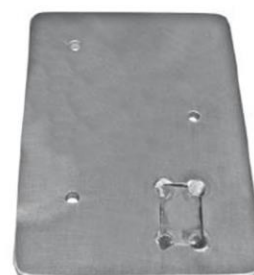
6. Front fixing plate



7. Three flared pins



8. Accessory: drilling template



## F- INSTALLATION GUIDE

### 1- Left side rear door

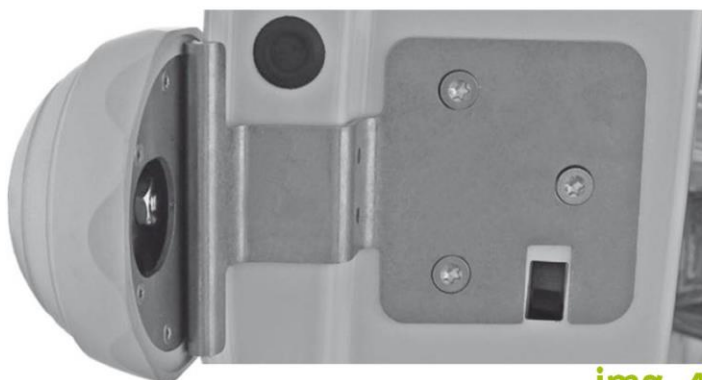
- Lift and extract the pressure bolts that secure the panel (**img 1**);
- Position the drilling template to make the diameter holes 3mm. Then enlarge the holes by diam. 3mm to dia. 8mm (**img 2**);
- Detach the rubber protection to access the inside of the panel and position the fixing plate (**img. 3**);
- When inserting the fixing plate, make sure that it is well positioned in correspondence with the holes made and the slot on the door;
- Position the left side rear door plate in correspondence with the lock fixing holes;
- Secure the plate with the three torx pins supplied (do not screw completely for final adjustment of the plate) (**img. 4**).



img.1



img.2



img. 4



img.3

## 2- Right side rear door

- Unscrew the two Torx screws that secure the handle support (**img 5**);
  - Position the right side rear door fixing plate. **Attention:** do not crush the gasket between the edges of the door and the plate (**img 6**);
  - Fix the plate with the two torx pins (do not tighten the screws completely for final adjustment of the plate);
  - Put the two doors closer together and check that the plates are aligned.
- Then tighten all screws well (**img. 7**).



img.5



img.6



img.7

## 3- Side sliding door plate

- Unscrew the torx screw securing the lock and screw the M8X25 stud to prevent the lock from detaching during installation (**img 8**);
- Position the side sliding door plate in correspondence with the holes and tighten the torx screw (**img 9**);
- Unscrew the M8X25 stud and screw the other torx screw (do not screw the screws completely for final adjustment of the plate).



img.8



img.9

#### 4- Side door fixing plate

- Unscrew the torx screw that secures the hook on the vehicle door and screw the supplied M8X25 stud to prevent the lock from detaching during installation;
- Unscrew the other torx screw, position the side door fixing plate and screw the previously unscrewed torx screw (**img 10**);
- Unscrew the stud and lock the bracket with the other original torx screw of the vehicle (do not screw the screws completely for the final adjustment of the plate);
- Put the two doors together and check that the plates are aligned (**img 11**), then tighten all the screws well.



img.10



img.11



**StarBlock<sup>®</sup>**

**ST AUTOMOTIVE SRL**  
**Ss 96 Strada Vicinale**  
**Lamarossa snc - 70026 Modugno (BA)**  
**T. +39 080 2143503 - F. +39 080 9692317**  
**[info@starblock.it](mailto:info@starblock.it)**



**[starblock.it](http://starblock.it)**